

VARIABLE VOLUME CELLS

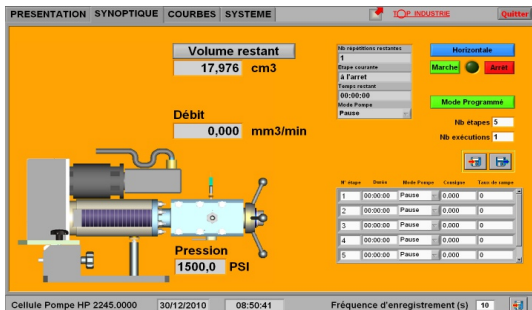
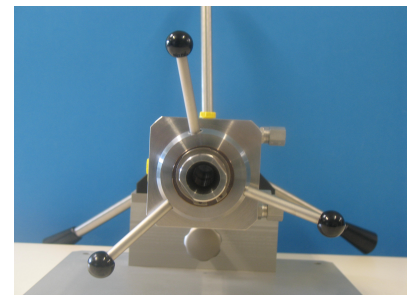
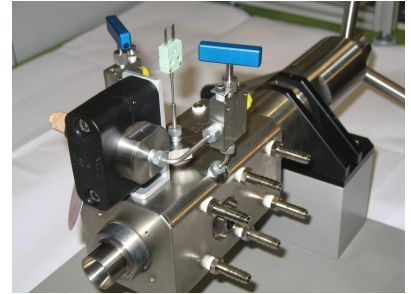


USES :

The variable volume pump cells TOP INDUSTRIE are aimed for studies at thermodynamics PVT, phase equilibria, supercritical CO₂. They operate under different conditions of pressure and temperature (up 1000 bar and 250 °C). Animated manually or automatically controlled by a motorisation, they allow to manage all the parameters of the study. They can be equipped with one or more windows sapphire and authorize control imaging: camera, measuring IR Raman spectroscopy...

FEATURES :

- Pressure of service: 100, 200, 500, 1000 bar.
- Volume: 5 to 30 ml.
- Temperature : -20 to 250 °C with coolant circulation.
- Materials : 1.4542 (option Hastelloy, Inconel...).
- All fluids, including corrosive fluids and supercritical CO₂.
- 1 to 3 windows sapphire (Ø aiming 6 to 30 mm).
- Pressure sensor: precision +/- 0.1% FS.
- 2 to 5 taps 1/8 HP.
- Control via touch screen (motorized cell).



OPTIONS ON PUMPS (MANUAL OU MOTORIZED):

- Camera with control panel and acquisition.
- Cold light.
- Magnetic stirring bar.
- Rev-counter indicating the precise position of the piston (pump manual).

